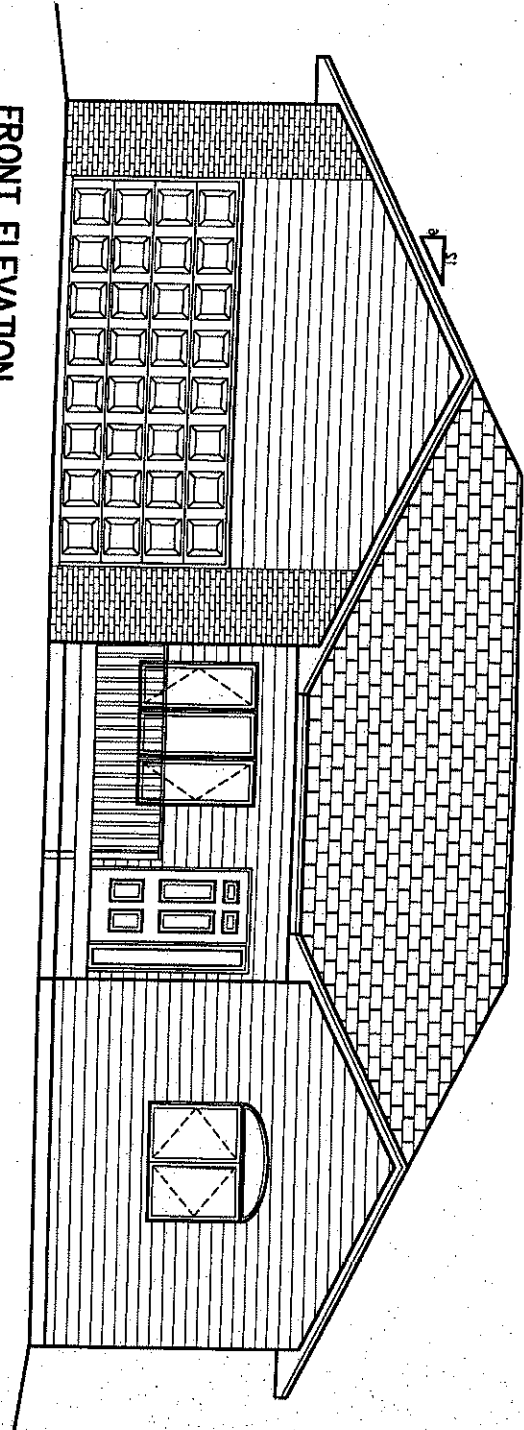
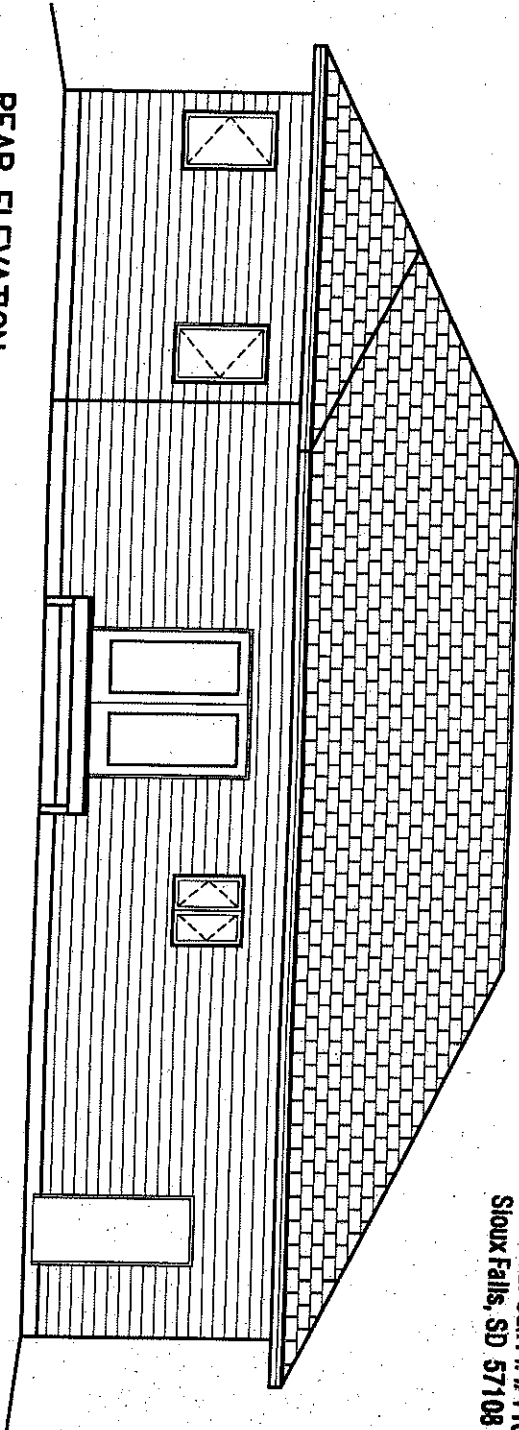


1004 PINE BROKE COURT

FRONT ELEVATION
1/4"=1'-0"



REAR ELEVATION
1/4"=1'-0"



JOSHUA INC.
5024 S. Burr Oak Pl. #1138
Sioux Falls, SD 57108

PLAN #
SFL06272



SCOTT LUMBER

A DIVISION OF LAMPETT YARDS, INCORPORATED

4040 S. GRANGE DR.
SIOUX FALLS, SD
57105
(605)256-0860

VERIFY ALL DIMENSIONS ALTHOUGH EVERY POSSIBLE EFFORT IS MADE TO INSURE THE ACCURACY OF DIMENSIONS AND OPENINGS, IT IS THE CONTRACTOR'S RESPONSIBILITY TO CHECK AND CONFIRM ALL ROUGH OPENINGS AND OTHER DIMENSIONS FOR ACCURACY.

THESE PLANS SHOW CONCEPTS AND SPECIFIC STRUCTURAL MEMBERS FOR NON-STANDARD APPLICATIONS. THE COMPANY/SHOWROOM PURCHASING THE LUMBER IS RESPONSIBLE FOR LUMBER MOISTURE AND ACCEPTED CONSTRUCTION TECHNIQUES FOR STRONG APPLICATIONS NOT SHOWN OR SPECIFIED. PLEASE SEE YOUR LUMBER YARD REPRESENTATIVE ABOUT ANY APPLICATION FOR WHICH YOU ARE USING.

CUSTOMER:
JOSHUA INC. / THE VONDRA

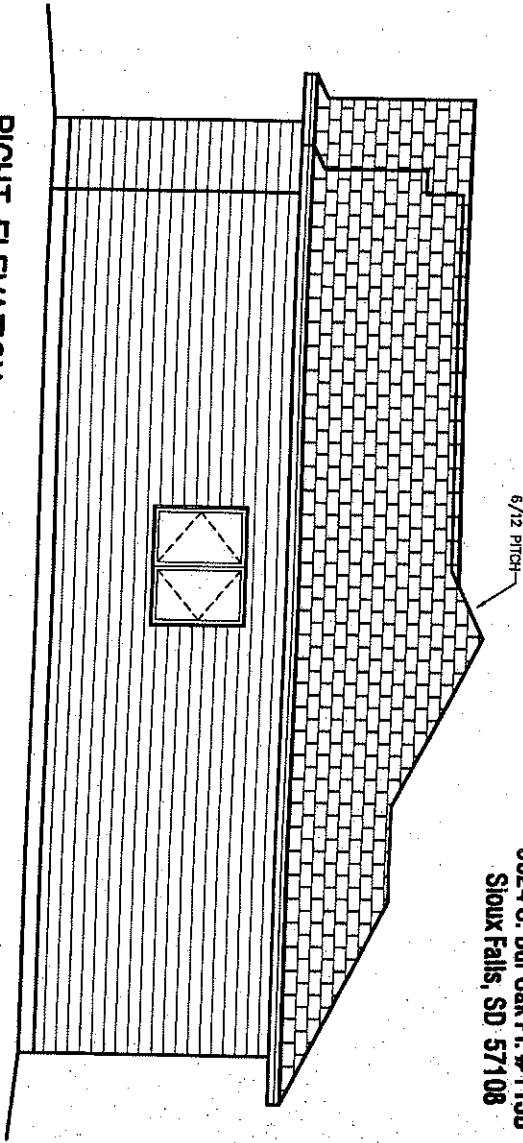
YARD:
SIOUX FALLS

DRAWN BY:
R.A.

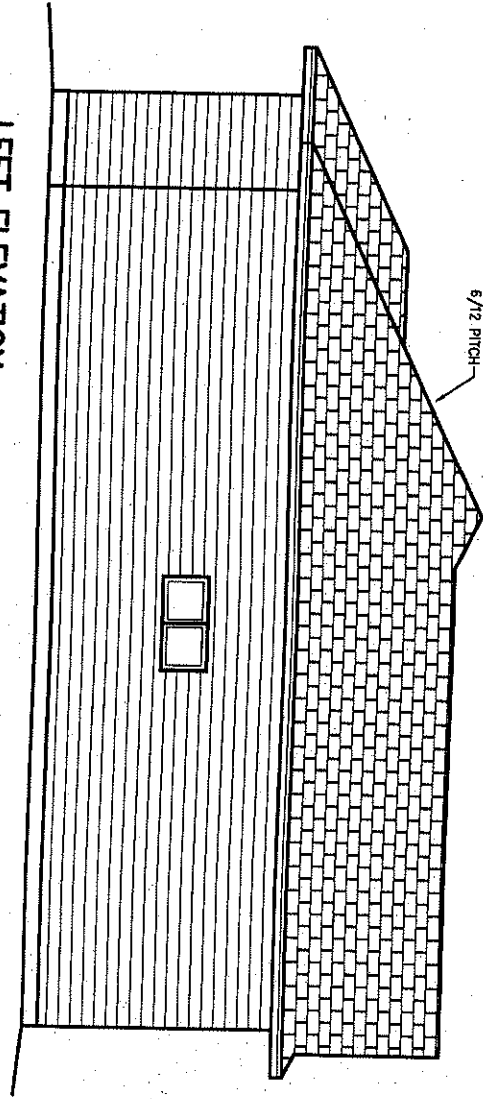
REVISED:

DATE:
4/26/06

RIGHT ELEVATION
1/4"=1'-0"



LEFT ELEVATION
1/4"=1'-0"



JOSHUA INC.
5024 S. Burr Oak Pl. #1138
Sioux Falls, SD 57108

PLAN #
SFL06272



SCOTT LUMBER

A DIVISION OF LAMPERT YARDS, INCORPORATED

4040 S. GRANGE DR.
SIOUX FALLS, SD 57105
(605)336-0560

VERIFY ALL DIMENSIONS ALTHOUGH EVERY POSSIBLE EFFORT IS MADE TO INSURE THE ACCURACY OF DIMENSIONS AND OPENINGS. IT IS THE CONTRACTOR'S RESPONSIBILITY TO CHECK AND CONFIRM ALL ROUGH OPENINGS AND OTHER DIMENSIONS FOR ACCURACY.

THESE PLANS DETAIL CONSTRUCTION AND SPECIFIC STRUCTURAL MEMBERS FOR NON-STANDARD APPLICATIONS. THE COMPANY/REMOVAL RESPONSIBILITY AND LARCO IS RESPONSIBLE FOR USING PROPER AND ACCEPTED CONSTRUCTION TECHNIQUES FOR STANDARD APPLICATIONS. SHOW OR ORANGE. ALLOW FOR YOUR LAMPERT WARE REPRESENTATIVE ABOUT ANY APPLICATIONS FOR WHICH YOU ARE USING.

CUSTOMER:
JOSHUA INC. / THE VONDRA

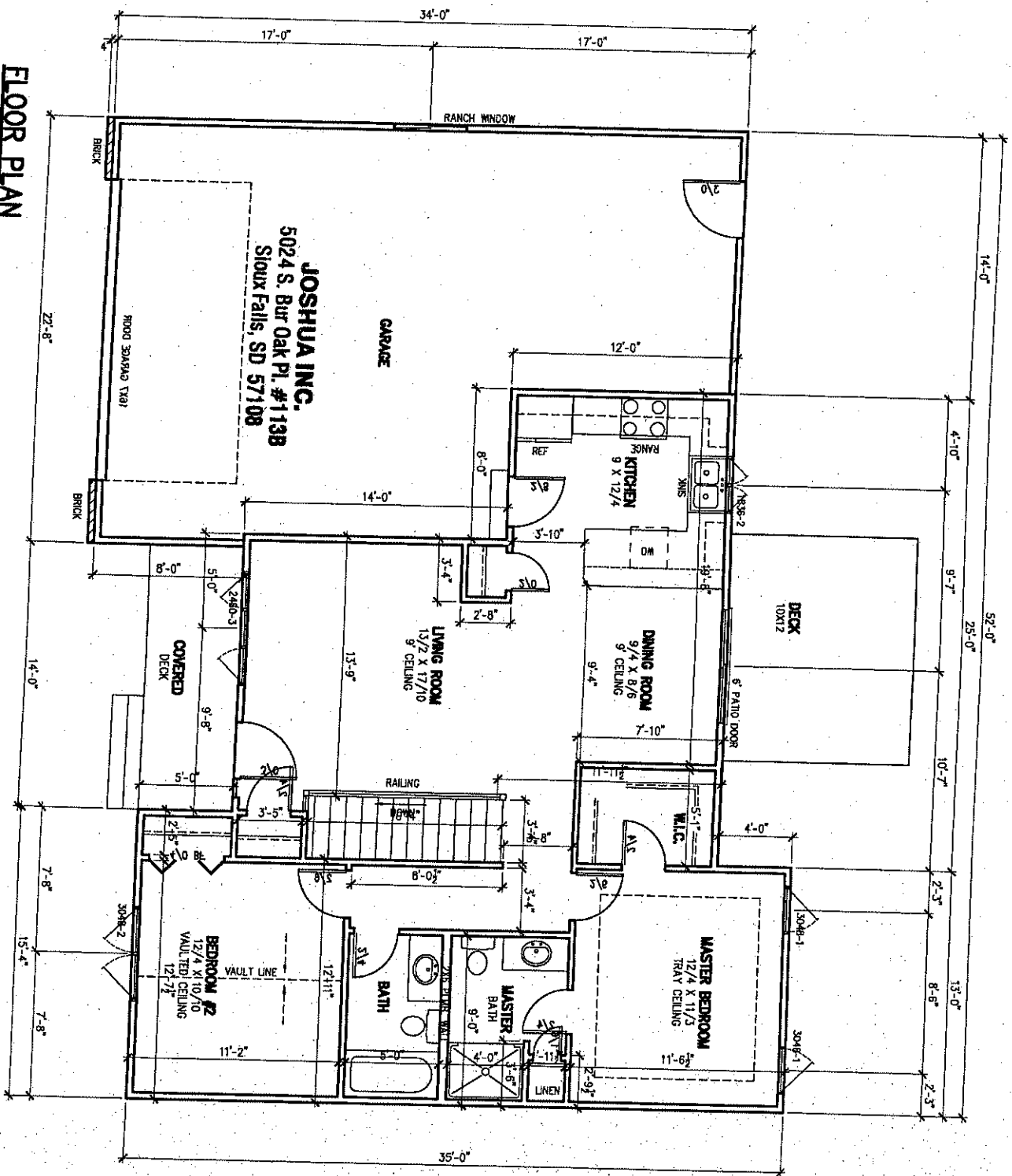
YARD:
SIOUX FALLS

DRAWN BY:
R.A.

REVISED:

DATE:
4/28/06

FLOOR PLAN
1/4" = 1'-0"
1005 SF



JOSHUA INC.
5024 S. Bur Oak Pl. #113B
Sioux Falls, SD 57108

PLAN # SFL06272
PAGE OF



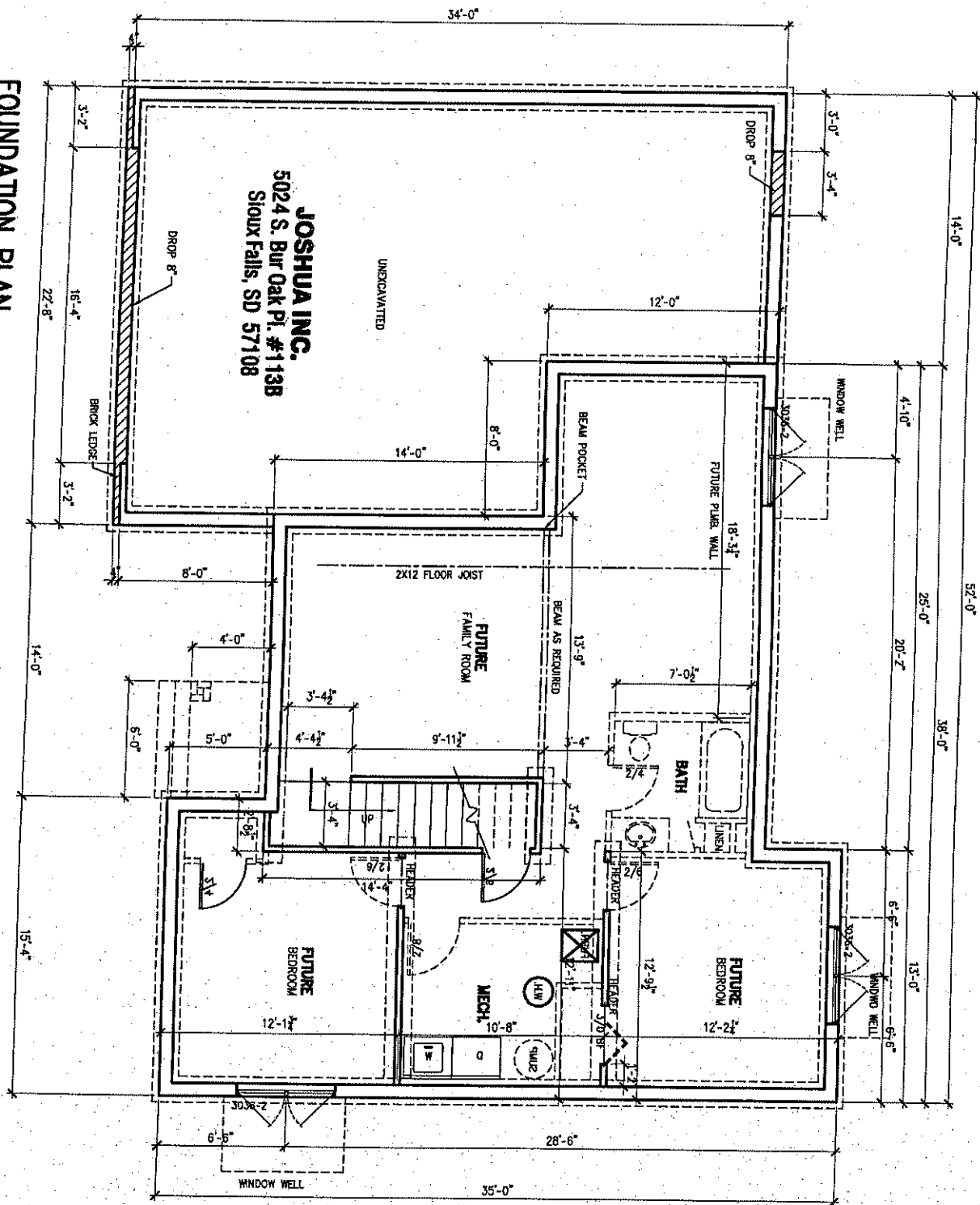
SCOTT LUMBER
A DIVISION OF LAMPERT YARDS, INCORPORATED

VERIFY ALL DIMENSIONS ALTHOUGH EVERY POSSIBLE EFFORT IS MADE TO INSURE THE ACCURACY OF DIMENSIONS AND OPENINGS, IT IS THE CONTRACTOR'S RESPONSIBILITY TO CHECK AND CONFIRM ALL ROUGH OPENINGS AND OTHER DIMENSIONS FOR ACCURACY.

THIS PLAN, SPECIFICATIONS AND SPECIAL STRUCTURAL MEMBERS FOR NON-STANDARD APPLICATIONS, THE COMPANY'S GENERAL CONTRACTOR'S LIABILITY FOR USING IMPROPER AND ACCEPTED CONSTRUCTION TECHNIQUES FOR STRONG APPLICATIONS NOT SHOWN OR SPECIFIED, PLEASE USE YOUR JUDGMENT, MAKE APPROPRIATE ADJUSTMENTS FOR LOADS YOU ARE APPLYING.

CUSTOMER: JOSHUA INC. / THE VONDRA	DRAWN BY: R.A.
YARD: SIOUX FALLS	REVIEWED:
DATE: 4/28/08	

FOUNDATION PLAN
1/4"=1'-0"



JOSHUA INC.
5024 S. Bur Oak Pl. #1138
Sioux Falls, SD 57108

PLAN # SFL06272
PAGE OF



VERIFY ALL DIMENSIONS. ALTHOUGH EVERY POSSIBLE EFFORT IS MADE TO INSURE THE ACCURACY OF DIMENSIONS AND OPENINGS, IT IS THE CONTRACTOR'S RESPONSIBILITY TO CHECK AND CONFIRM ALL ROUGH OPENINGS AND OTHER DIMENSIONS FOR ACCURACY.

THIS PLAN DETAIL, CONNECTIONS AND SPECIAL STRUCTURAL MEMBERS FOR NON-STANDARD APPLICATIONS, THE COMPANY, MEMORIAL, ASSUMES NO LIABILITY OR RESPONSIBILITY FOR USING THESE AND ACCEPTED CONSTRUCTION TECHNIQUES FOR STRAPPING APPLICATIONS BUT SHALL BE RESPONSIBLE FOR YOUR LAMPERT TRADE REPRESENTATIVE'S BEST AND APPROPRIATE FOR EACH TO THE LAMBERT.

CUSTOMER: JOSHUA INC. / THE VONDRA
YARD: SIOUX FALLS

DRAWN BY: R.A.
REVISOR:
DATE: 4/26/06